



Project LIFE16 ENV/IT/000566 LIFE GREEN GRAPES



New approaches for protection
in a modern sustainable viticulture:
from nursery to harvesting

SCHEDE AZIENDALI E CAMPI DI SPERIMENTAZIONE

- Deliverable 1 - Action A1 -



LIFE16-ENV-IT-000566

TABLE OF CONTENTS:

FARMS FORMS AND VINEYARDS FORMS COMPLETE WITH MAPS (*SCHEDE TECNICHE AZIENDALI E DEI CAMPI DELLA SPERIMENTAZIONE E SCHEDE VIGNETO COMPLETE DI MAPPE*)

Cyprus:

ZINONAS CHARILAOU

Italy:

Beringer Blass Italia srl – Soc. Agricola – Castello di Gabbiano

F.LLI Tagliente

FARMS FORMS AND VINE NURSERY FORM COMPLETE WITH MAPS (*SCHEDE TECNICHE AZIENDALI E DEI CAMPI DELLA SPERIMENTAZIONE E SCHEDE VIVAI COMPLETE DI MAPPE*)

Italy:

Vititalia c/o Vivai Bianchi Carla



LIFE16-ENV-IT-000566

FARM CYPRUS

Farm name: ZINONAS CHARILAOU

Complete address: KIMONOS 51, 3095, LEMESSOS

Geographic coordinates : 34°41'22.36"N, 33° 3'0.72"E

Farm area (ha): 15

Grape cultivar: SOULTANINA

EXPERIMENTAL PLOTS

Plot name (or code): LIFE GREEN

Geographic coordinates : 34°42'14.40"N, 32°40'42.13"E

Altitude(m.s.l.a.): 100

Slope: 5°

Exposition: E

Plot area (ha): 15

Grape cultivar: e: SOULTANINA

Training system: TREE CUP

Rootstock: SOULTANINA

Planting density: 2m , 1.1 x 1.2

Planting year: 1965

MAP OR SATELLITE IMAGE



FARM

Farm name: Beringer Blass Italia srl – Soc. Agricola – Castello di Gabbiano

Complete address: Via Gabbiano 22 – 50026 San Casciano Val di Pesa (Firenze) – Italy

Geographic coordinates : GMS N 43° 37' 36.966" E 11° 15' 27.122"

Farm area (ha): 138,8 ha

Grape cultivar: 80% Sangiovese; 14% Merlot; 5%; 1% San Colombano, Malvasia

EXPERIMENTAL PLOTS

Plot name: Marzocco Grande

Geographic coordinates : 43°38'38.96"N 11°15'29.45"E

Altitude(m.s.l.a.): 174

Slope: 19°

Exposition: E

Plot area (ha): 5

Grape cultivar: e: Sangiovese

Training system: spur pruning, single cordon.

Rootstock: 110R

Planting density: m 2,60x0,7

Planting year: 2011

EXPERIMENTAL PLOTS

Plot name: Marzocco Ferrone

Geographic coordinates : 43°38'46.66"N 11°15'32.80"E

Altitude(m.s.l.a.): 160

Slope: 29°

Exposition: N E

Plot area (ha): 2,5

Grape cultivar: e: Sangiovese

Training system: spur pruning, single cordon.

Rootstock: 110R

Planting density: m 2,60x0,7

Planting year: 2011

EXPERIMENTAL PLOTS

Plot name: Baciò

Geographic coordinates : 43°38'50.28"N - 11°15'32.80"E

Altitude(m.s.l.a.): 180

Slope: 29°

Exposition: E

Plot area (ha): 2

Grape cultivar: e: Sangiovese

Training system: spur pruning, single cordon.

Rootstock: 110R

Planting density: m 2,60x0,7

Planting year: 2011

MAP OR SATELLITE IMAGE





LIFE16-ENV-IT-000566

FARM

Farm name: Fratelli Tagliente

Complete address: Corso Roma 151 Massafra (Ta) – Italy

Geographic coordinates: N 40°59' E 17° 12'

Farm area (ha): ha 13 table grapes (16 ha citrus fruit)

Grape cultivar: Crimson seedless, Thompson seedless

EXPERIMENTAL PLOTS

Geographic coordinates : N 40° 36' 10 ” E 17° 06' 58”

Altitude(m.s.l.a.): 0

Slope: 0%

Exposition:

Plot area (ha): 1

Grape cultivar: Crimson seedless, Thompson seedless

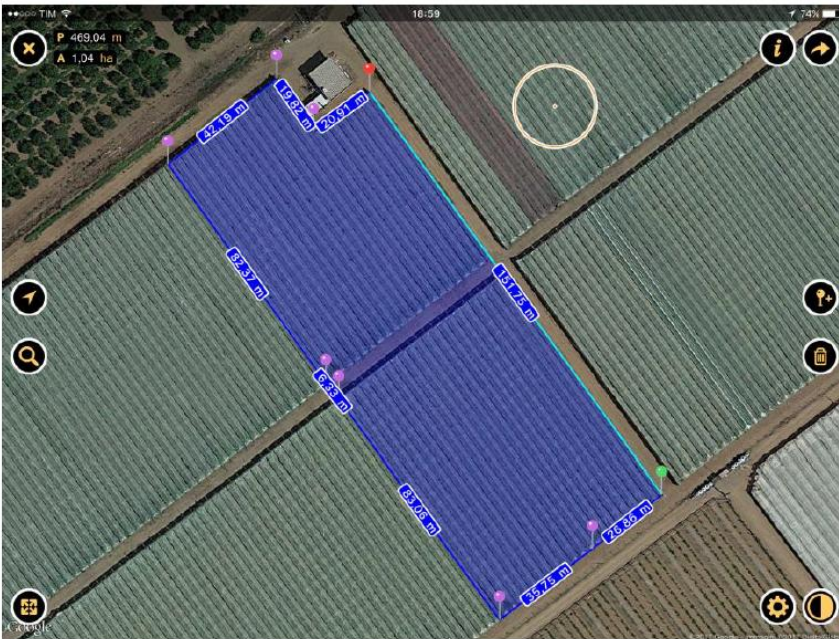
Training system: tendone

Rootstock: 1103 Paulsen

Planting density: 1500 piante/ha

Planting year: 2011

MAP OR SATELLITE IMAGE



FARM

Farm name: Vititalia

Complete address: Piazza Grande, 4 57123 LIVORNO - ITALY

EXPERIMENTAL PLOTS

Geographic coordinates : 43°47'12.85"N 10°24'36.64"E

Altitude(m.s.l.a.): 0

Slope: 0%

Exposition:

Plot area (ha): 2,5 ha

Grape cultivar: more cultivar

Training system: spur pruning, single cordon.

Rootstock: more

Planting density: m 3x0,6

Planting year: 2011

MAP OR SATELLITE IMAGE

